

82X10

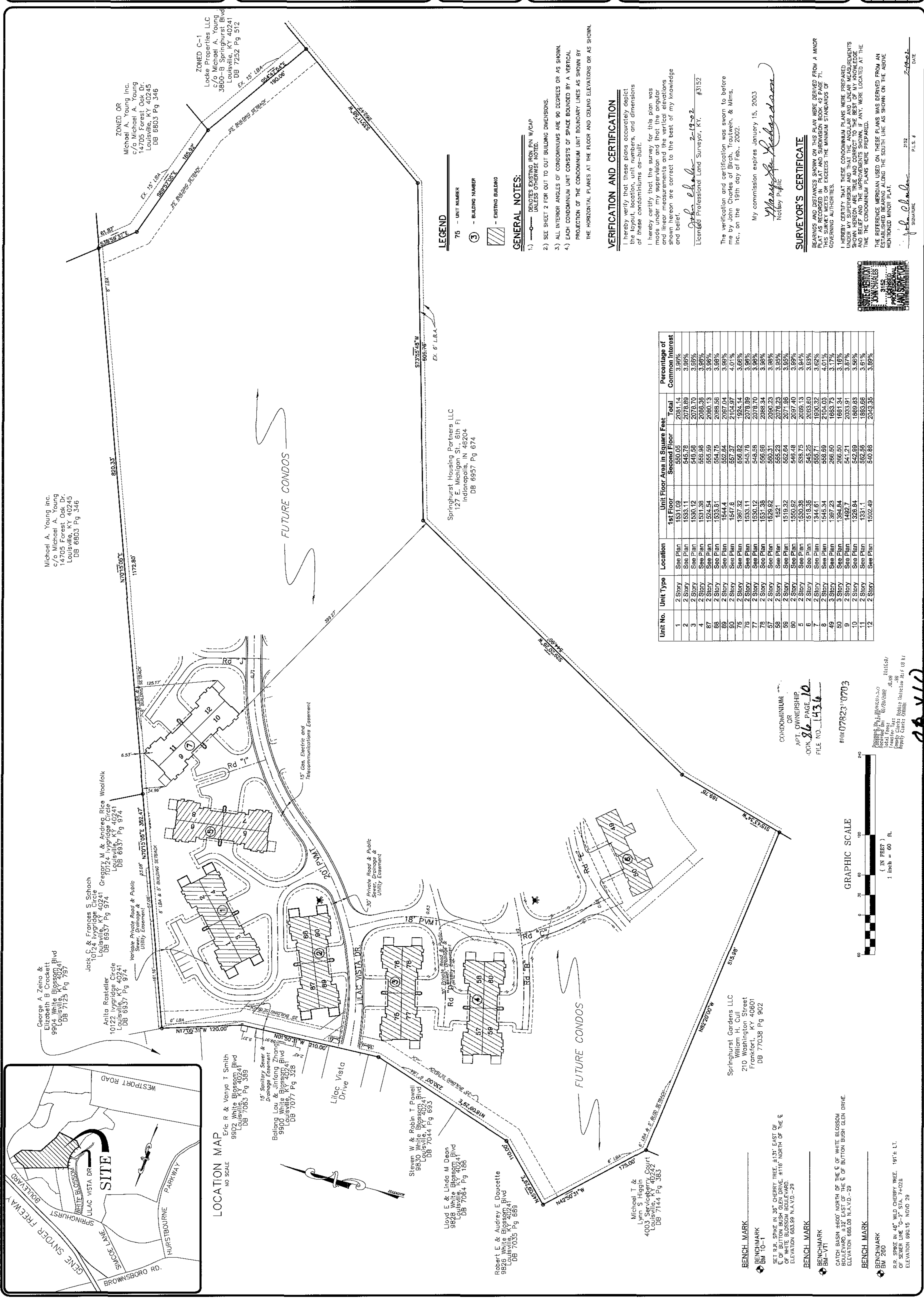
NO.	DATE	DESCRIPTION	BY

BTR
 Consulting Engineers & Architects, Inc.
 3001 Taylor Springs Drive
 Louisville, Kentucky 40220
 (502) 498-8427 Phone
 (502) 498-8427 Fax

FOR
**THE VILLAGE OF
 SPRINGMEADOW CONDOMINIUMS**
 CONDOMINIUM REGIME UNITS 9-12

DEVELOPER:
MICHAEL A. YOUNG, INC.
 14705 Forest Oak Dr.
 Louisville, Kentucky 40245
 (502) 432-6948
 FAX BLOCK 6894 LOT 133

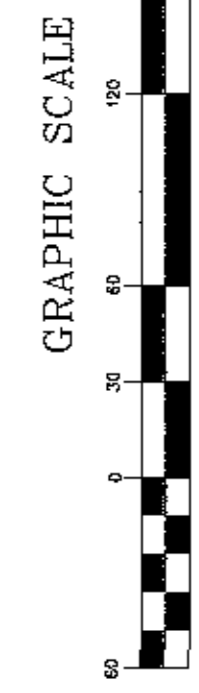
DATE: 2/12/02
 DRAWING: 8302020CP9-12
 SCALE: 1"=60'
 SHEET 1 OF 2



82X10

82X10

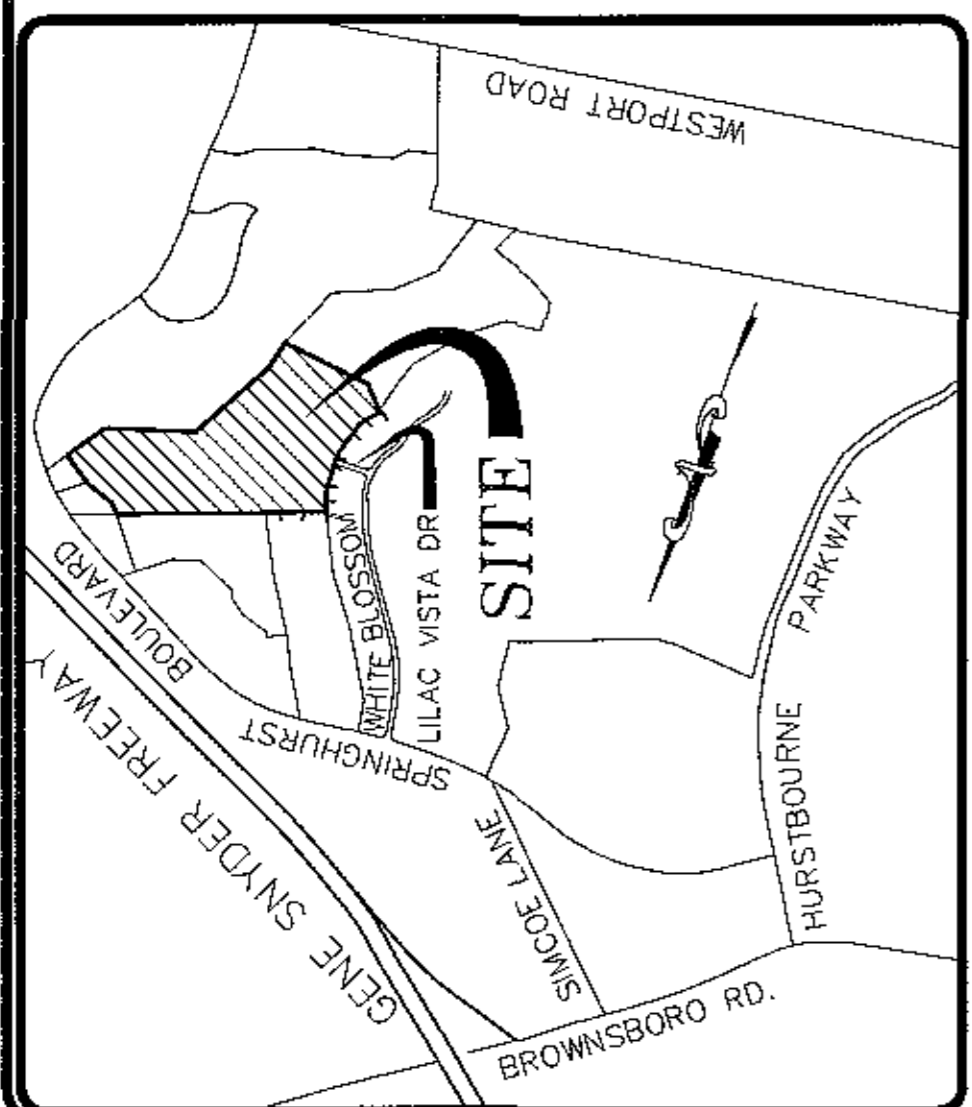
Unit No.	Unit Type	Location	Unit Floor Area in Square Feet		Total Common Interest
			1st Floor	Second Floor	
1	2 Story	See Plan	1531.09	2081.14	3.98%
2	2 Story	See Plan	1531.11	2078.89	3.98%
3	2 Story	See Plan	1530.12	2078.70	3.98%
4	2 Story	See Plan	1531.38	2088.36	3.98%
87	2 Story	See Plan	1524.54	2080.13	3.98%
88	2 Story	See Plan	1533.81	2088.56	3.98%
89	2 Story	See Plan	1544.4	2087.04	3.98%
90	2 Story	See Plan	1647.6	2104.97	4.01%
76	2 Story	See Plan	1387.32	1924.14	3.68%
77	2 Story	See Plan	1533.11	2078.89	3.98%
78	2 Story	See Plan	1530.12	2078.70	3.98%
79	2 Story	See Plan	1531.38	2088.34	3.98%
57	2 Story	See Plan	1628.92	2090.23	3.98%
58	2 Story	See Plan	1621	2076.23	3.95%
59	2 Story	See Plan	1518.32	2071.86	3.95%
60	2 Story	See Plan	1550.92	2097.40	3.98%
5	2 Story	See Plan	1530.39	2083.60	3.95%
6	2 Story	See Plan	1545.25	2083.60	3.95%
7	2 Story	See Plan	1545.25	2083.60	3.95%
8	2 Story	See Plan	1545.25	2083.60	3.95%
49	3 Story	See Plan	1397.23	1663.73	3.17%
50	3 Story	See Plan	1394.84	1661.34	3.16%
9	2 Story	See Plan	1492.7	2033.91	3.67%
10	2 Story	See Plan	1328.84	1669.83	3.56%
11	2 Story	See Plan	1331.1	1663.66	3.61%
12	2 Story	See Plan	1502.49	2043.35	3.98%



CONDOMINIUM OR
 APT. OWNERSHIP
 BOOK 86 PAGE 10
 FILE NO. 1436
 #00007823-0703

Recorded by: [Signature]
 Date: [Date]
 County Clerk: [Signature]

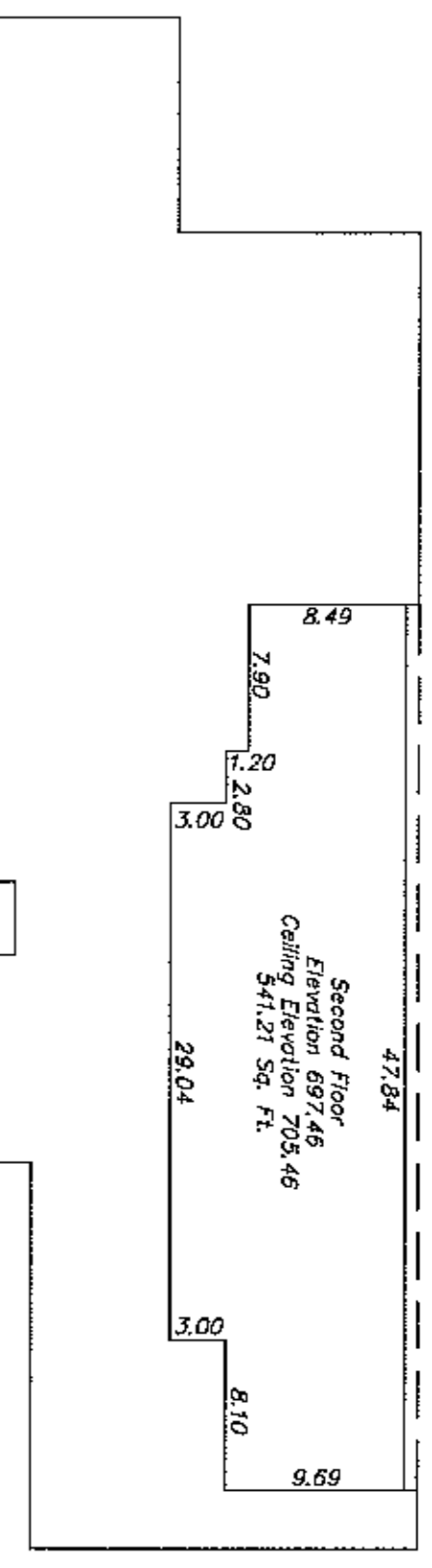
LOCATION MAP
 NO SCALE



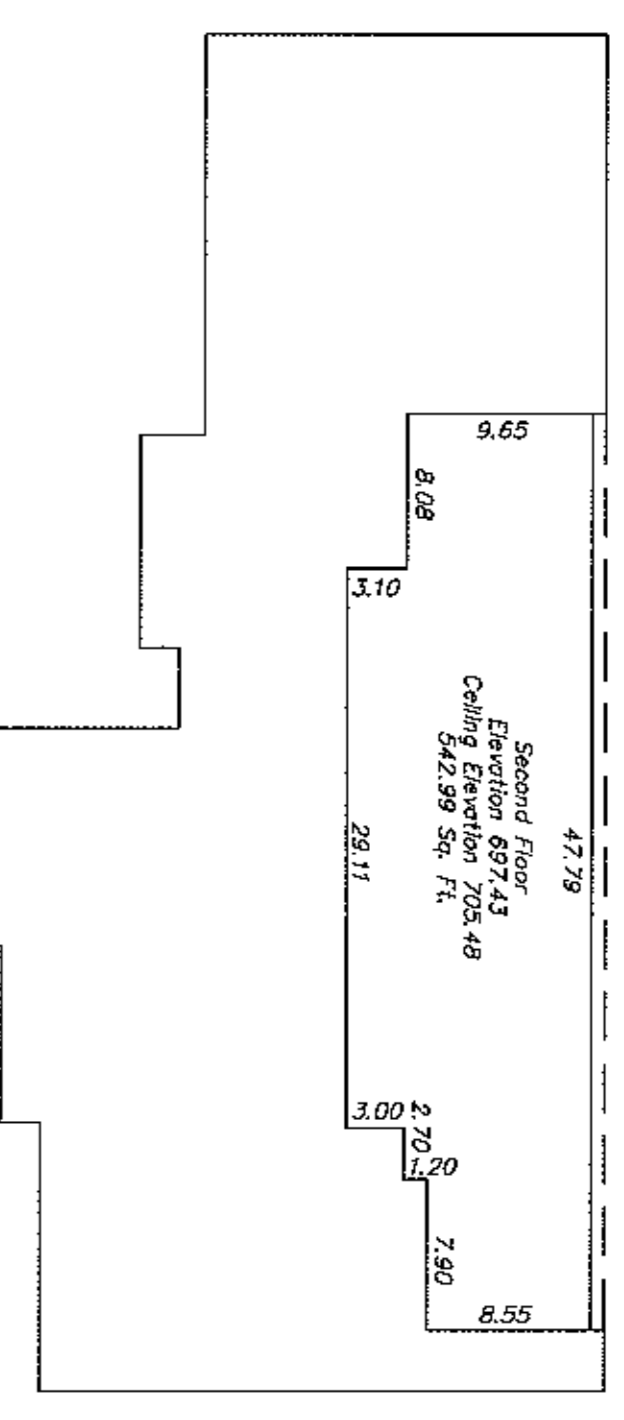
82X10

86X11

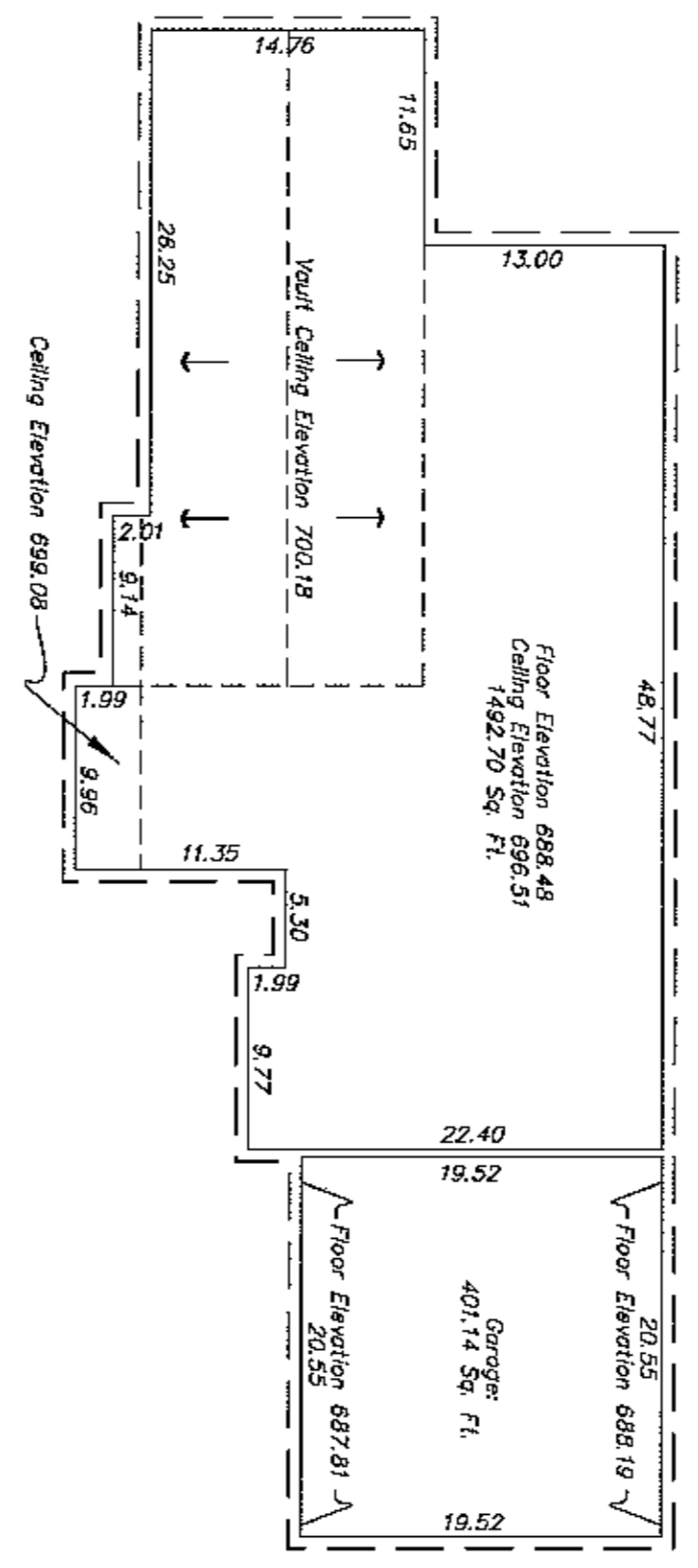
11X98



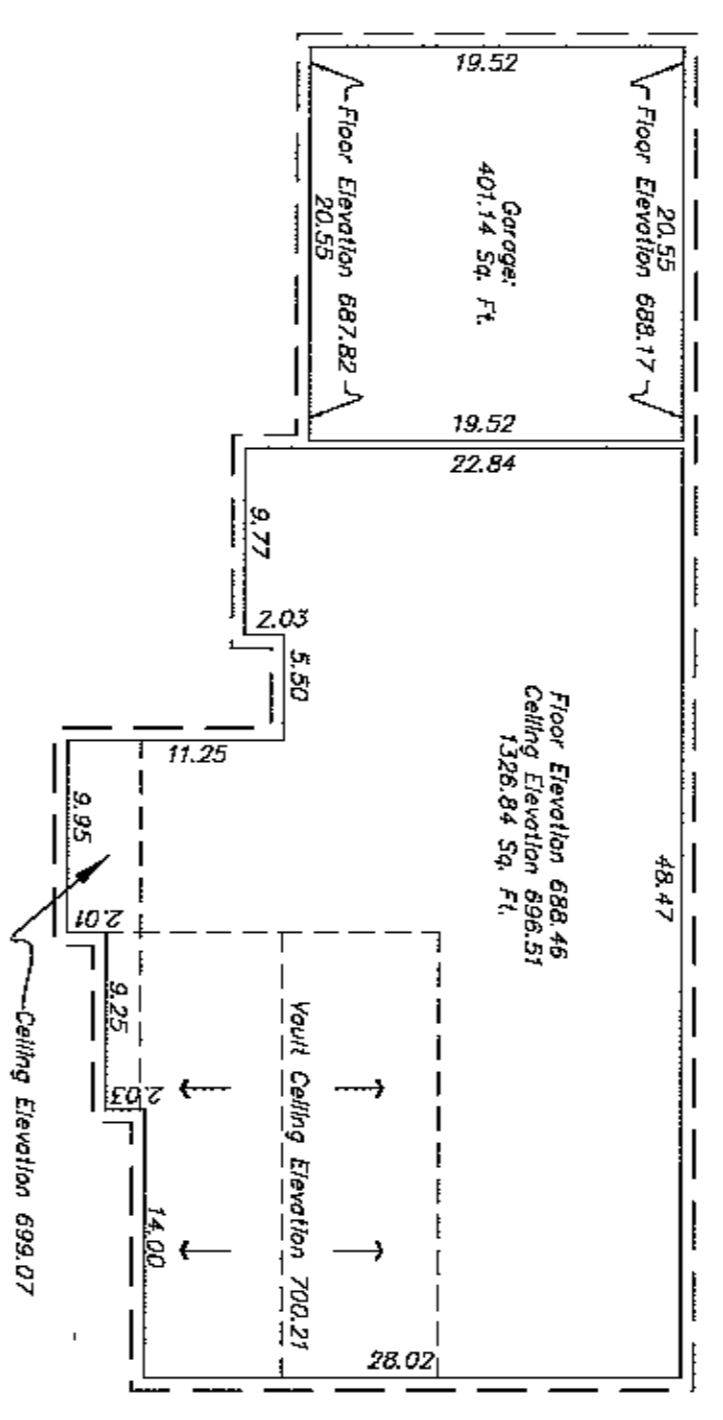
UNIT #9
SECOND FLOOR



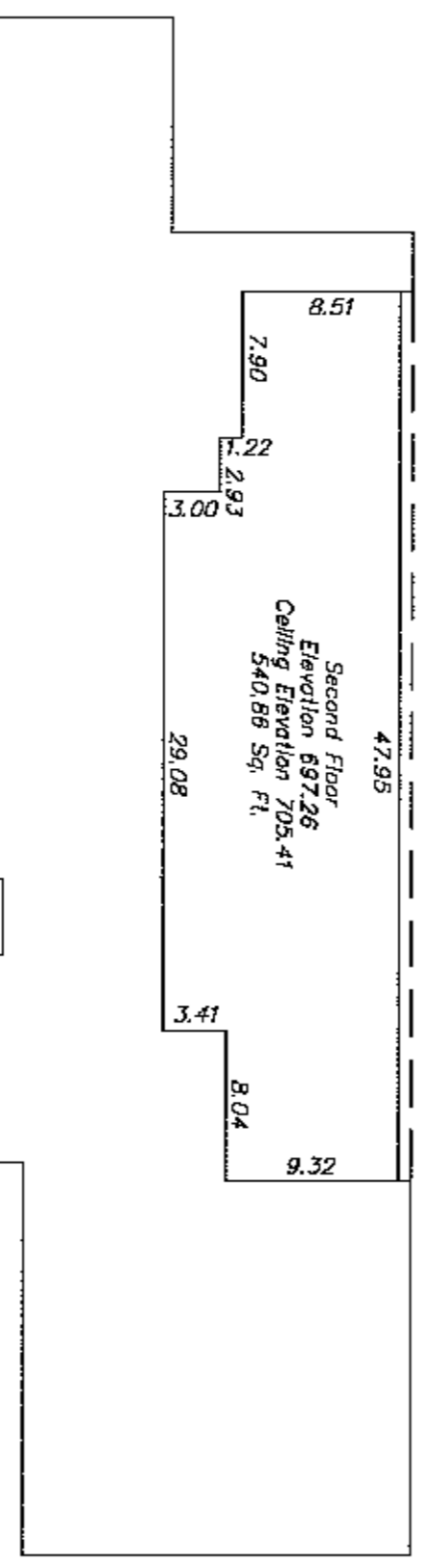
UNIT #10
SECOND FLOOR



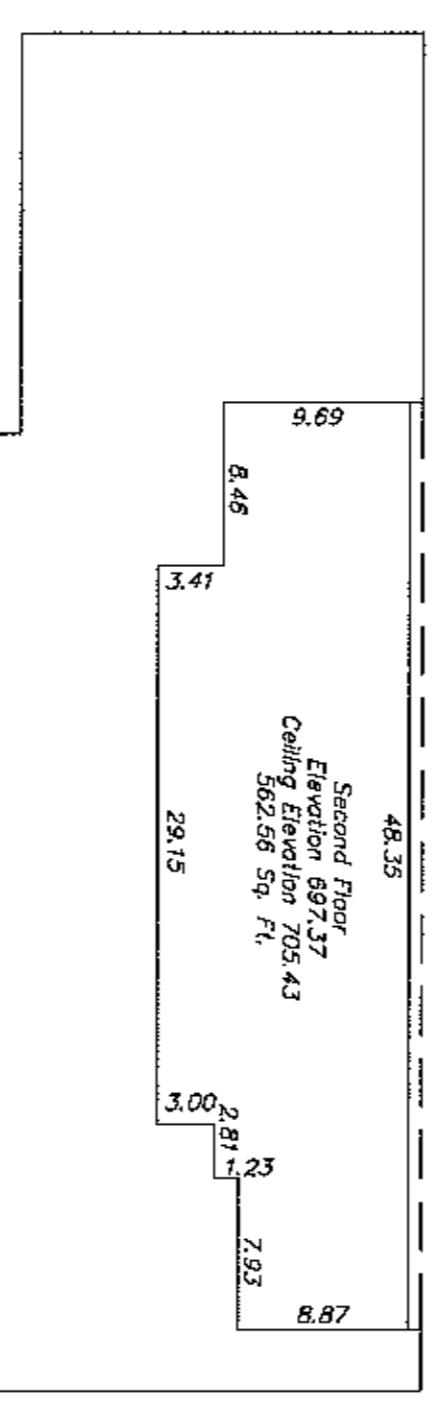
FRONT UNIT #9
FIRST FLOOR



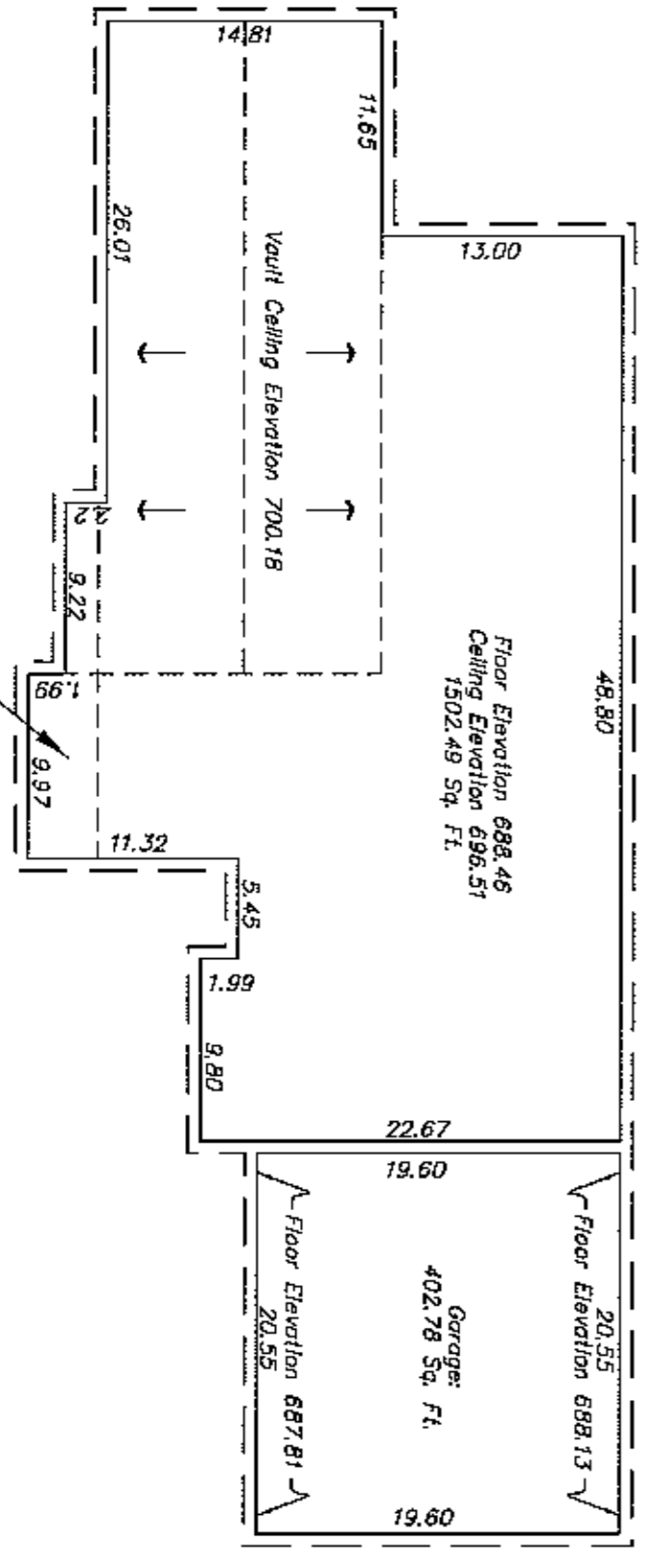
FRONT UNIT #10
FIRST FLOOR



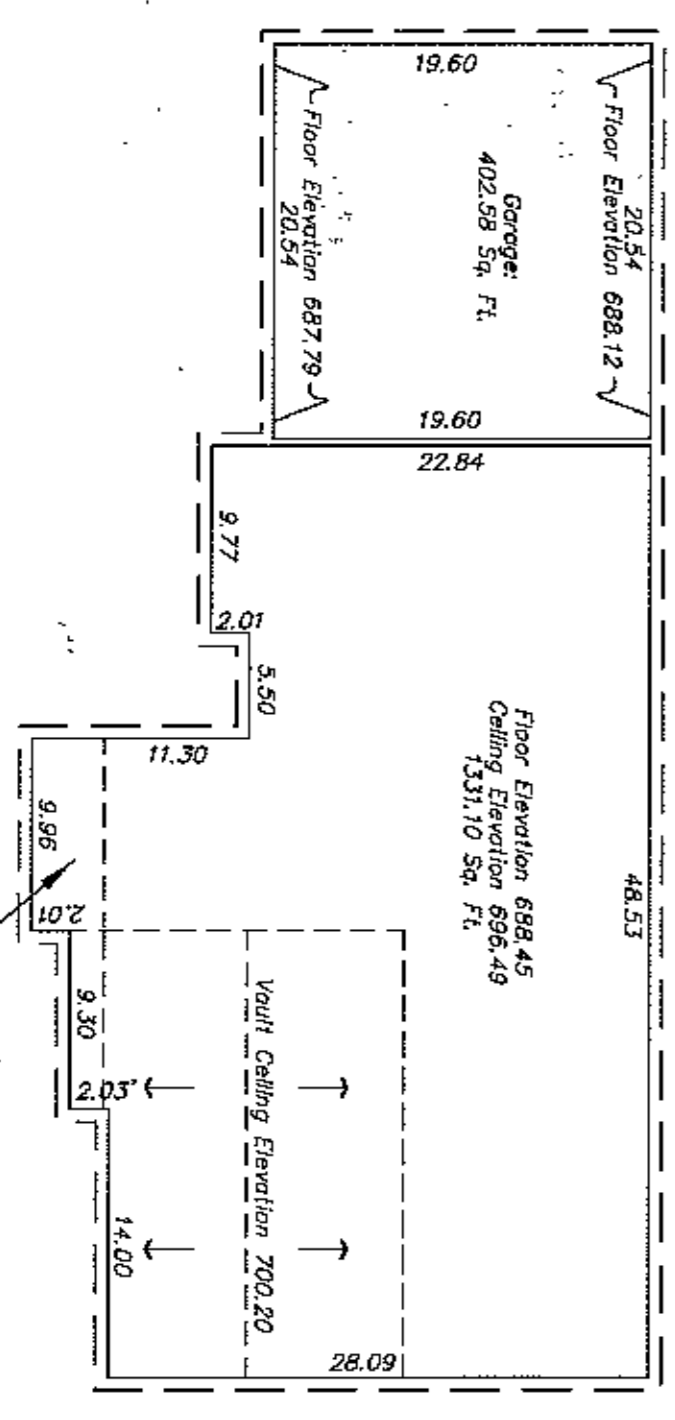
UNIT #11
SECOND FLOOR



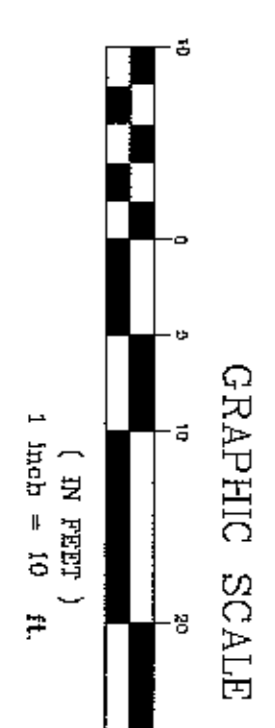
UNIT #12
SECOND FLOOR



FRONT UNIT #11
FIRST FLOOR



FRONT UNIT #12
FIRST FLOOR



86X11

CONDOMINIUM
OR
APT. OWNERSHIP
PAGE 11
OF 14
BMP 07823-0782
-1E NO. 1436



VERIFICATION AND CERTIFICATION
I hereby certify that these plans accurately depict the layout, location, unit numbers, and dimensions of these condominiums as-built.
I hereby certify that the survey for this plan was made under my supervision and that the original and linear measurements and the vertical elevations shown hereon are correct to the best of my knowledge and belief.
John Charles
Licensed Professional Land Surveyor, KY. #3152

GENERAL NOTES:
1.) --- DENOTES EXISTING IRON PIN W/ CAP UNLESS OTHERWISE NOTED.
2.) ALL INTERIOR ANGLES OF CONDOMINIUMS ARE 90 DEGREES OR AS SHOWN.
3.) EACH CONDOMINIUM UNIT CONSISTS OF SPACE BOUNDED BY A VERTICAL PROJECTION OF THE CONDOMINIUM UNIT BOUNDARY LINES AS SHOWN BY THE HORIZONTAL PLANS AT THE FLOOR AND CEILING ELEVATIONS OR AS SHOWN.

LEGEND:
DENOTES UNITED COMMON SPACE

CONDOMINIUM REGIME UNITS 9-12
FOR: **THE VILLAGE OF SPRINGMEADOW CONDOMINIUMS ASSOCIATION**
OWNER/DEVELOPER: **MICHAEL A. YOUNG, INC.**
PROPERTY ADDRESS: 8310 NEW LOGRANGE ROAD, Louisville, Kentucky 40242
TAX BLOCK 6884 LOT 335

BIRCH, TRAUTWEIN & MIMS, INCORPORATED
Consulting Engineers Landscape Architects Planners
3001 Taylor Springs Drive
Louisville, Kentucky 40220
(502)-459-8402 Phone
(502)-459-8427 Fax

BT

REVISIONS

NO.	DATE	DESCRIPTION	BY

DATE: 2/12/02
DRAWING: 990020CP9-12FP
SCALE: 1"=10'
SHEET 2 OF 2

86X11